

1.	.....	3
1.1	.....	3
1.2	SAE J2534 .....	3
1.3	Pass-Thru.....	4
2.	MaxiFlash Pro .....	5
2.1	.....	5
2.2	.....	7
2.3	.....	9
2.4	.....	9
2.5	,	11
2.6	.....	12
3.	.....	13
3.1	.....	13
3.2	.....	14
3.2.1	Ethernet .....	15
3.2.2	MaxiFlash .....	17
3.2.3	.....	18
4.	J2534- .....	19
5.	.....	21
6.	.....	22
6.1	.....	22
6.2	.....	22



J2534

( J2534-1),

- ( J2534-1)

2004

SAE J2534

J2534-

Pass-

Thru.

1.3

**Pass-Thru**

SAE J2534

Pass-Thru.

J2534-

Pass-Thru

DSL,

1,544 / (T1).

2.

### MaxiFlash Pro

MaxiFlash® Pro!

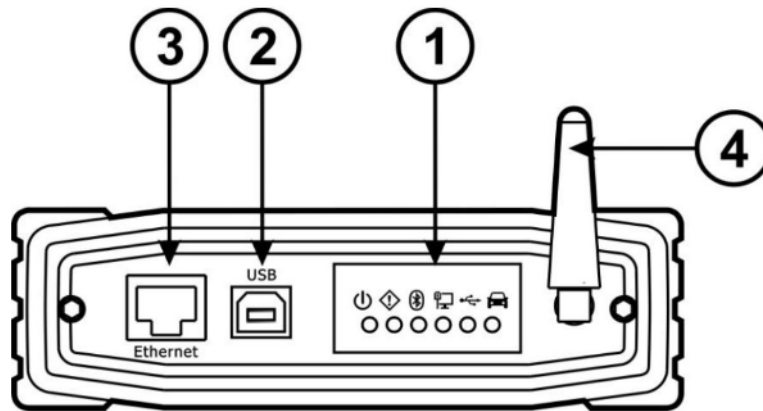
Pass-Thru  
J2534-1 SAE J2534-2 (

2006 ),

SAE

2.1

MaxiFlash® Pro Pass-Thru  
: Ethernet, USB Wi-fi ,



1)

Pass-Thru

6

1.

Wi-Fi	Wi-
USB	USB-

2) **USB**  
USB

USB-

3) **Ethernet**  
Ethernet

Ethernet,

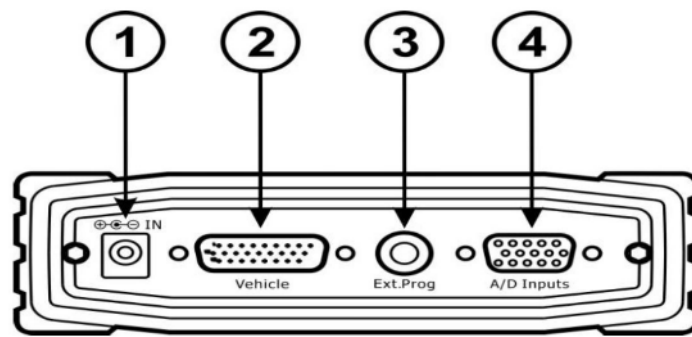
*Ethernet*

*Ethernet.*

4) **Wi-Fi**  
Wi-Fi,

Autel MaxiSys,

2.2



1)

( . 12 )

2)

DB-26 MVCI - OBDII

3)

5-20

Mitsubishi, Subaru

4)

12-

-

0 27,5

DB-15

2 —

2	6	
4	3	
6		( .200 )
8	4	
10	1	
12	5	
14	2	
1, 3, 5, 7, 9, 11, 13, 15		

2.3

Pass-Thru

-

- 1. MVCI - OBDII
- 2.

*OBD II*

- 3. OBD II
- 4.

-

- 1.
- 2.
- 3.

*Ethernet- USB-*

2.4

**MaxiFlash® Pro**

:

•

1

;

J2534-



;

3—

	6 26 ( . )
	350 6 ( . )
	200 12 ( . )
	110 24 ( . )
	0 +60 °C ( )
	-65 +100 °C ( )
	: 183,8
	: 135,5
	: 41
	0,54

---

CAN / ISO15765 / GMLAN

CAN / ISO15765 / GMLAN ( )

Ford SCP (J1850PWM)

- GM Class 2 (J1850VPW)
- KWP2000 (ISO9141 / 14230)
- Chrysler SCI (J2610)



- SAE J2534-1 (2004) J2534-2 (2006),
- ISO 22900-1 ( )
- J1962 ( 4, 5 16) Aux
- : 1, 2, 9, 12 15
- 2.5 ,
- 1. --
- 2. **MVCI - OBDII** --
- 3. DB-26
- 4. **USB** --
- 4. **Ethernet** --
- 5. **Wi-fi** -- (
- 6. Wi-Fi).
- 6. --
- 7. - -- ,
- **Autel** ,
- 8. --
- 9. --
- 5-20 .

## 2.6

- ◆
- ◆
- ◆
- ◆

10

- ◆
- ◆
- ◆

Ethernet, USB Wi-fi.

### 3.

#### 3.1

Pass-Thru

MaxiFlash Pro J2534

#### J2534 Pass-Thru

:

- ◆
- ◆
- ◆
- ◆ USB-

USB-  
J2534 Pass-Thru

1.

2.

3.

Next [      ].

Next [      ].

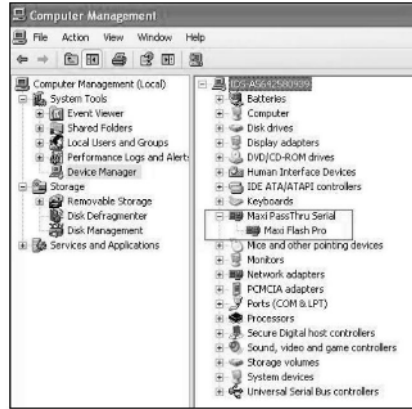
4.

Install [      ]

*MS-DOS,*

*MS-DOS*

5. Pass-Thru USB-
6. Install the software automatically (Recommended) [ Next [ Windows ( )].
7. MaxiFlash Pro, Install [ ].
8. MaxiFlash Pro Maxi Pass Thru Serial Maxi Flash Pro ( 3.1).



3.1

3.2

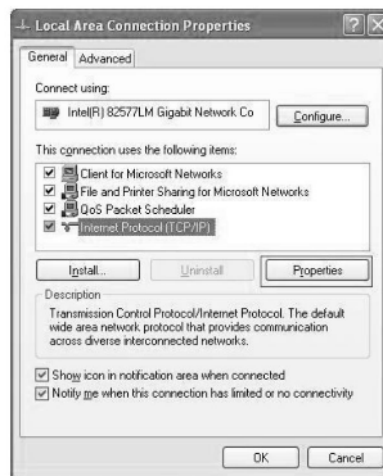
MaxiFlash Pro  
Pass-Thru

### 3.2.1

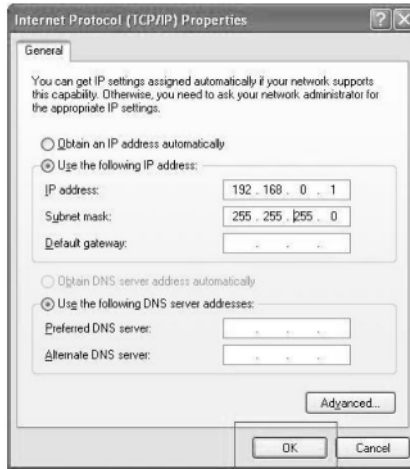
## Ethernet

### Pass-Thru

1. Pass-Thru Ethernet,
2. My Network Places [ ] Properties
3. [ ] Local Area Connection [ ] Properties [ ]
4. Local Area Connection Properties [ ] Internet Protocol (TCP/IP) Properties [ ] (TCP/IP),



5. Internet Protocol (TCP/IP) Properties [ :  
 (TCP/IP)]. Use the following IP address  
 [ IP- ] IP- ( IP-  
 3.3), OK.  
 IP-



3.3

6. ( 3.2.2. MaxiFlash  
 ).

1. Pass-Thru Ethernet,  
 2. MaxiFlash Pro IP-  
 , DHCP.

### 3.2.2 MaxiFlash

1. Pass-Thru
2. Ethernet, ( ).
3. Ethernet
4. All Programs [ ] Start [ ] Windows, MaxiFlash Pro Autel, MaxiFlashCFG 3.4.



3.4

5. Settings [ ],
6. DHCP, MaxiFlash Pro (IP- Manual [ ],
7. Apply [ ], IP-



### 3.2.3

Pass-Thru,

1. Pass-Thru Ethernet
2. USB, ( )
3. Ethernet USB
4. All Programs [ ] Start [ ] Windows,  
MaxiFlash Pro Autel, MaxiFlashCFG  
3.4.



3.5

5. Update [ ],
6. Next [ ],
7. Cancel [ ],

4.

J2534-

- ,  
- <http://etools.org/>,  
,

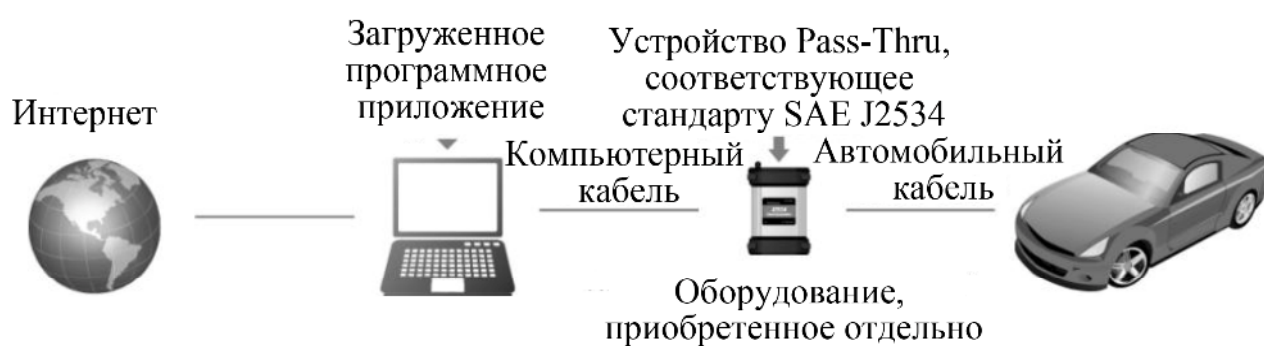
MaxiFlash Pro

Pass-Thru,

(DTC)  
OBD II

J2534

MaxiFlash Pro.



4 — -

BMW	<a href="http://www.bmwtechinfo.com/">http://www.bmwtechinfo.com/</a>
Mini	<a href="http://www.minitechinfo.com/">http://www.minitechinfo.com/</a>
Porsche	<a href="http://www.porsche.com/">http://www.porsche.com/</a>
Chrysler, Jeep, Dodge	<a href="http://www.techauthority.com/">http://www.techauthority.com/</a>
Ford, Lincoln, Mercury	<a href="http://www.motorcraft.com/">http://www.motorcraft.com/</a>
Land Rover	<a href="http://www.landrovertechinfo.com/">http://www.landrovertechinfo.com/</a>

	- ,
Volvo	<a href="http://www.volvotechinfo.com/">http://www.volvotechinfo.com/</a>
Cadillac, Chevrolet, Daewoo, GM, GEO, Pontiac, Buick, Saturn, SAAB	<a href="http://www.gmtechinfo.com/">http://www.gmtechinfo.com/</a>
Acura, Honda	<a href="http://www.serviceexpress.honda.com/">http://www.serviceexpress.honda.com/</a>
Isuzu	<a href="http://www.isuzutechinfo.com/">http://www.isuzutechinfo.com/</a>
Mazda	<a href="http://www.mazdaserviceinfo.com/">http://www.mazdaserviceinfo.com/</a>
Mercedes	<a href="http://www.startekinfo.com/">http://www.startekinfo.com/</a>
Mitsubishi	<a href="http://www.mitsubishitechinfo.com/">http://www.mitsubishitechinfo.com/</a>
Nissan	<a href="http://www.nissan-techinfo.com">http://www.nissan-techinfo.com</a>
Toyota, Lexus, Scion	<a href="http://techinfo.toyota.com/">http://techinfo.toyota.com/</a>
Volkswagen	<a href="http://www.erwin.volkswagen.de/erWinVW">http://www.erwin.volkswagen.de/erWinVW</a>
Audi	<a href="http://erwin.audi.de/erWinAudi">http://erwin.audi.de/erWinAudi</a>

5.

(FCC)  
: WQ82012J2534

15

RSS-210.

1.  
2.

!

B

15

; (ii)

: (i)

; (iii)

; (iv)

/

20

**RoHS**

2011/65/EU (RoHS).

: 2004/108/EC (

CE oo o x  
) 2006/95/EC ( ) 1999/5/EC ( )  
) 2006/95/EC ( )

**6.**

**6.1**

Autel

1 ( )

1.

Autel

Pass-Thru

2.

3.

Autel

4.

Autel

**6.2**

Autel,

- [www.auteltech.com](http://www.auteltech.com).